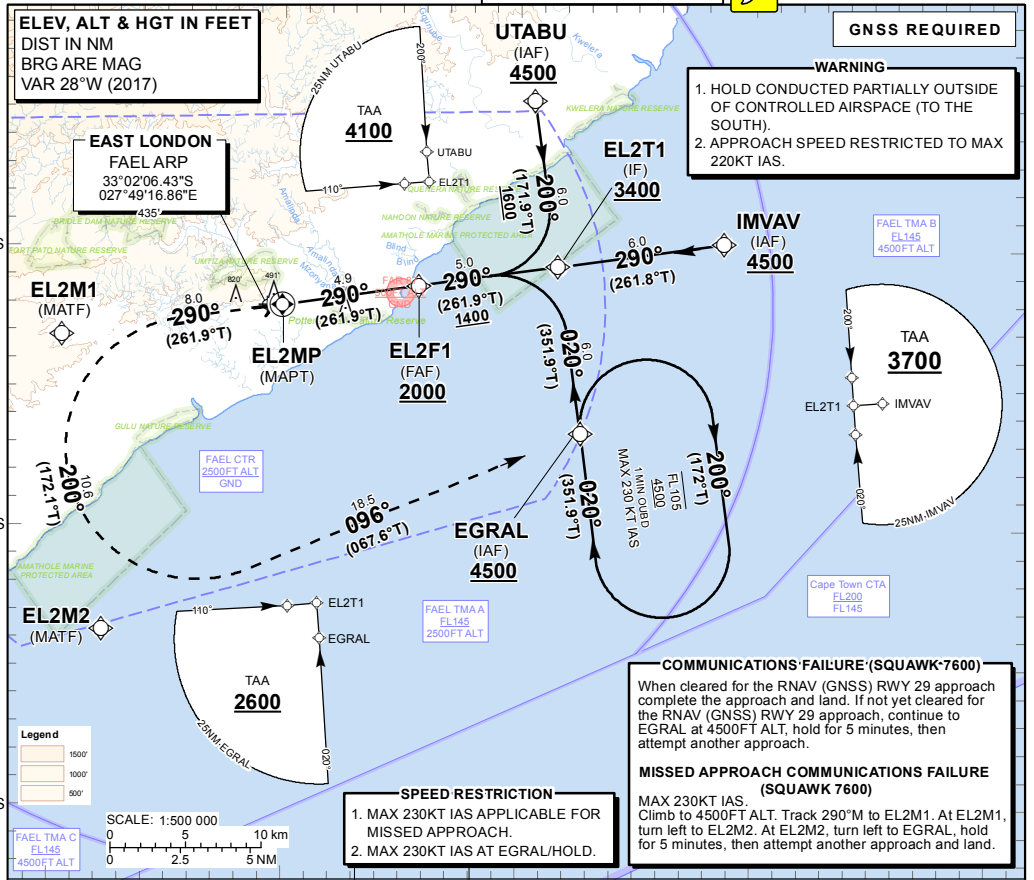


INSTRUMENT APPROACH CHART - ICAO **AERODROME ELEV 435'**
HEIGHTS RELATED TO THR RWY 29 - ELEV 385'

FAEL: ATIS: 126.65
 APN: 122.65
 TWR: 118.30
 APP: 120.10

EAST LONDON RNAV (GNSS) RWY 29
 CAT A - D



	27°40'E	27°50'E	28°0'E	28°10'E	28°20'E
Distance from THR 29	4.9	4.0	3.0	2.0	1.0
ADVISORY ALT(HGT)	2000 (1615)	1710 (1325)	1390 (1005)	1080 (695)	760 (375)

TRANSITION ALT 7000
TRANSITION LEVEL ATC

MISSED APPROACH:
 MAX 230KT IAS. Climb to 4500' ALT.
 Track 290°M to EL2M1. At EL2M1, turn left to EL2M2. At EL2M2, turn left to EGRAL, or as directed by ATC.



Straight-in Approach	OCA (H)	A	B	C	D	GS	KT	80	100	120	140	160	180
								FPM	424	530	636	742	848
LNNAV	2.5%	930 (545)	930 (545)	930 (545)	930 (545)	FAF to THR 29	M:S	3:41	2:57	2:27	2:06	1:50	1:38
LNNAV/VNAV	2.5%	770 (385)	770 (385)	770 (385)	770 (385)	Rate of descent	FPM	424	530	636	742	848	954
RVR		1000m	1200m	1200m	1600m	NOTE:							
ALS OUT		1500m	1500m	2000m	2000m	1. MAPT at THR.							
Circling		1130 (695)	1130 (695)	1470 (1035)	1470 (1035)	2. Turns prior MAPT prohibited.							
						3. BaroVNAV operations not authorised below 0°C and MAX VPA 3.5°C, Temperature +71°C.							

CHANGE: New Procedure

EFF: 20 JUL 17